



PRESTIGE  COLLECTION

# ONE PORT ST.

NORTHERN QUARTER

*Where luxury meets legacy*

Introducing the most exquisite standards of luxury living to Manchester's very own cultural powerhouse, One Port Street will revolutionise the build-to-rent market in the Northern Quarter.

Soon to become Manchester's most desired development, One Port Street stands in a league of its own. A five-star living experience in the city's creative capital, residents will have access to the finest amenities on the market, pushing the boundaries of resident experience like never before.



# Interiors to admire

Vivid splashes of colour and contemporary art invite and inspire residents from all walks of life. Re-defining the boundaries of work-life balance, One Port Street's expansive lobby combines cosy seating space and private booths to create a casual atmosphere for working, relaxing and socialising.

Attention to detail has been carefully crafted to give residents a home of excellent comfort and style

# Overview

**Completion:** Q4 2025

**Location:** Port Street, Northern Quarter,  
Manchester

A landmark destination in the heart of  
Manchester's creative capital

477 luxury one, two and three-bedroom  
apartments

32 storeys with spectacular views across the city

Five-star lifestyle benefits including a swimming  
pool, spacious gymnasium, and 7th floor club  
lounge with a rooftop terrace

The first development within the Prestige  
Collection

**Developed and managed by:**  
Select Property

## PRESTIGE COLLECTION

One Port Street is the first project to come from the  
Prestige Collection – Select Property's flagship residential  
brand, so exclusive there will only be one landmark  
development in each city.

With all the amenities of a five-star hotel and the exclusivity  
of a private member's club, the Prestige Collection doesn't  
just tick the boxes, it defines new ones.

## Amenities that define luxury

Overlooking the vibrant Northern Quarter, the 7th floor club lounge includes Paganini's lounge & garden terrace also available for private hire; innovative co-working space with private booths; and private dining areas for residents to delight guests.

Luxury extends through the entire building, with a state-of-the-art leisure suite comprised of a 2,000 sq foot swimming pool and relaxing spa pool.

A secluded retreat away from the demands of city life, skylight windows create tranquil natural lighting whilst maintaining privacy.



PRESTIGE  COLLECTION

# City living, reimagined

### A shared vision brought to life

As the proud developer of One Port Street, Select Property are collaborating with renowned local architect firm, SimpsonHaugh, and award-winning contractor, Renaker, to deliver a masterpiece of modern living.

*“Manchester’s skyscrapers are changing the way people live. The population in the city centre has grown from 400 in the late 1980s to more than 60,000.”*

**SimpsonHaugh**  
Architects of One Port Street

### Spaces that tell a story

One Port Street’s interiors take inspiration from Manchester’s proud industrial past and working-class roots. Embracing raw architectural elements, communal areas combine wood, metal, stone and fire to create a stylish urban sanctuary in the heart of Manchester’s art district.

Taking influence from warehouse and loft conversions without the compromise on quality and layout, Port Street blends opulent luxury and urban renewal to create the ambience of a five-star boutique hotel.

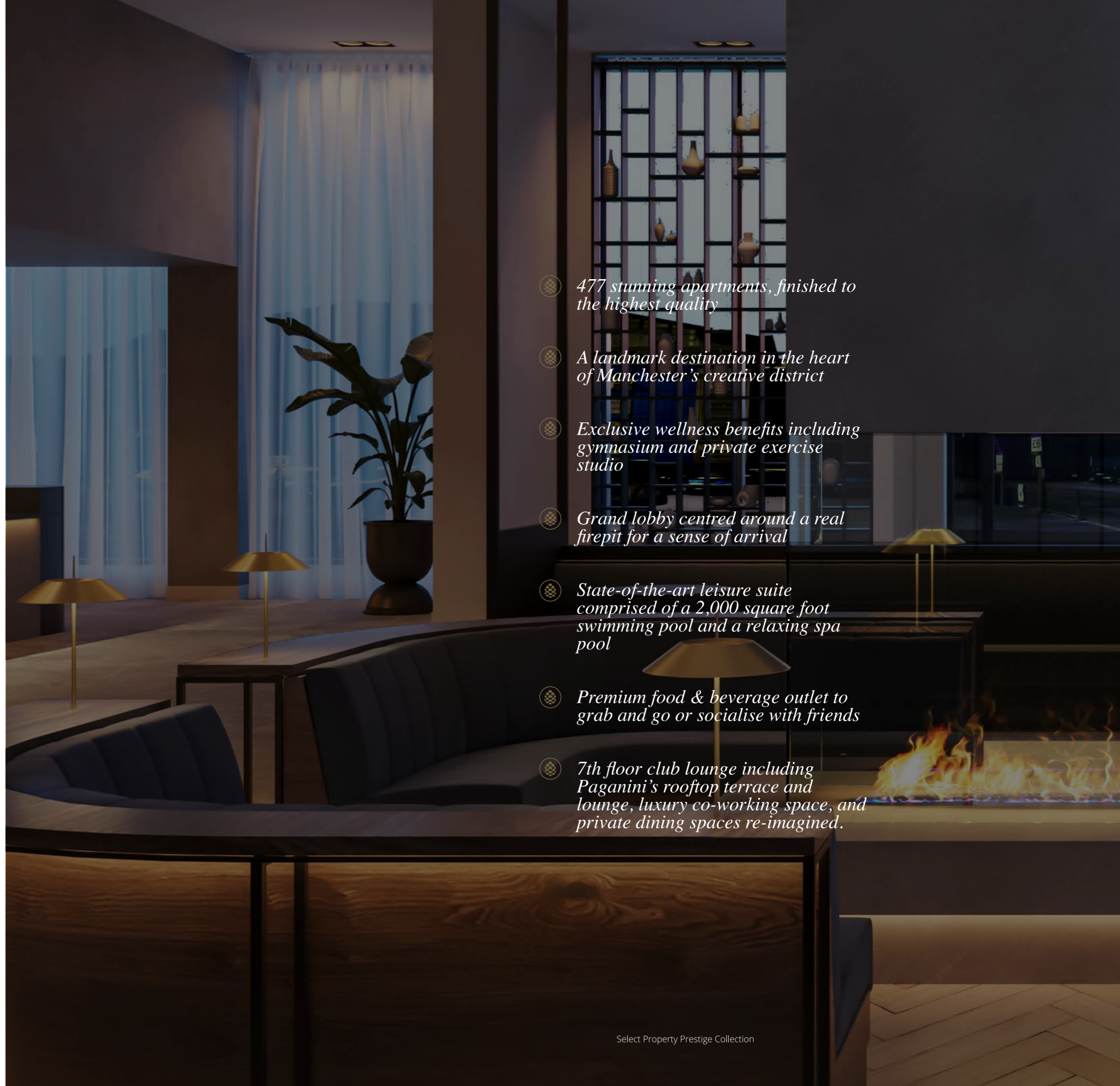
Developer:




Architect:





Contractor:





 *477 stunning apartments, finished to the highest quality*


 *A landmark destination in the heart of Manchester’s creative district*

 *Exclusive wellness benefits including gymnasium and private exercise studio*

 *Grand lobby centred around a real firepit for a sense of arrival*

 *State-of-the-art leisure suite comprised of a 2,000 square foot swimming pool and a relaxing spa pool*

 *Premium food & beverage outlet to grab and go or socialise with friends*

 *7th floor club lounge including Paganini’s rooftop terrace and lounge, luxury co-working space, and private dining spaces re-imagined.*

# PAGANINI'S

ONE PORT ST.

An inner city retreat, Paganini's is One Port Street's 7th floor resident lounge and rooftop terrace with a functional bar available for private hire.









Residents have their own leisure suite comprised of a 2,000 square foot private swimming pool and a spa pool, with skylight windows emitting natural light.















# Location



The 'street-art capital' of the city, the Northern Quarter is Manchester's answer to Shoreditch, Brooklyn, or West Hollywood.



One Port Street, Northern Quarter, Manchester



Select Property Prestige Collection



# Location

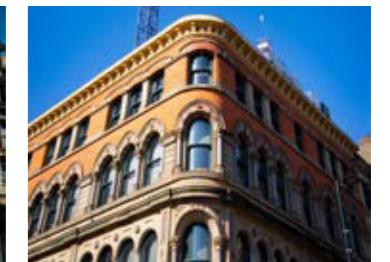
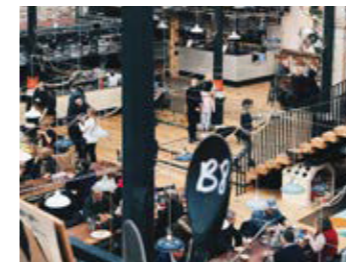
## Manchester's world renowned creative centre

### Strategically located.

Ideally located on Great Ancoats Street in the iconic Northern Quarter, One Port Street is nestled in a vibrant community of its own. An intimate district in the heart of the city, the Northern Quarter gives residents the best of both worlds – a tightknit community within walking distance to every corner of the city centre.

Residents will be spoilt for choice with Ancoats on the other side of the road, recently voted one of the coolest neighbourhoods in the world by Time Out Magazine.

With limited supply of residential property and hardly any available land to build in the area, One Port Street's tier 1 location is second to none.



### The Northern Quarter and Ancoats

Described for years as 'up-and-coming', the Northern Quarter is officially the here and now.

Self-named 'NQ', the Northern Quarter is a world-renowned creative centre, buzzing with character rooted in its industrial past. Edwardian mills and Victorian warehouses were ideally placed to be converted into independent eateries, bars, coffee shops and music venues, characterised by exposed brick and iron columns along quintessentially British cobbled streets.

Efforts to retain the look and feel of the Northern Quarter's cultural heritage have been largely successful in the area, making it a trendy hotspot for young professionals to live and work.

The 'Street-Art Capital' of the city, the Northern Quarter is Manchester's answer to Shoreditch, Brooklyn, or West Hollywood.

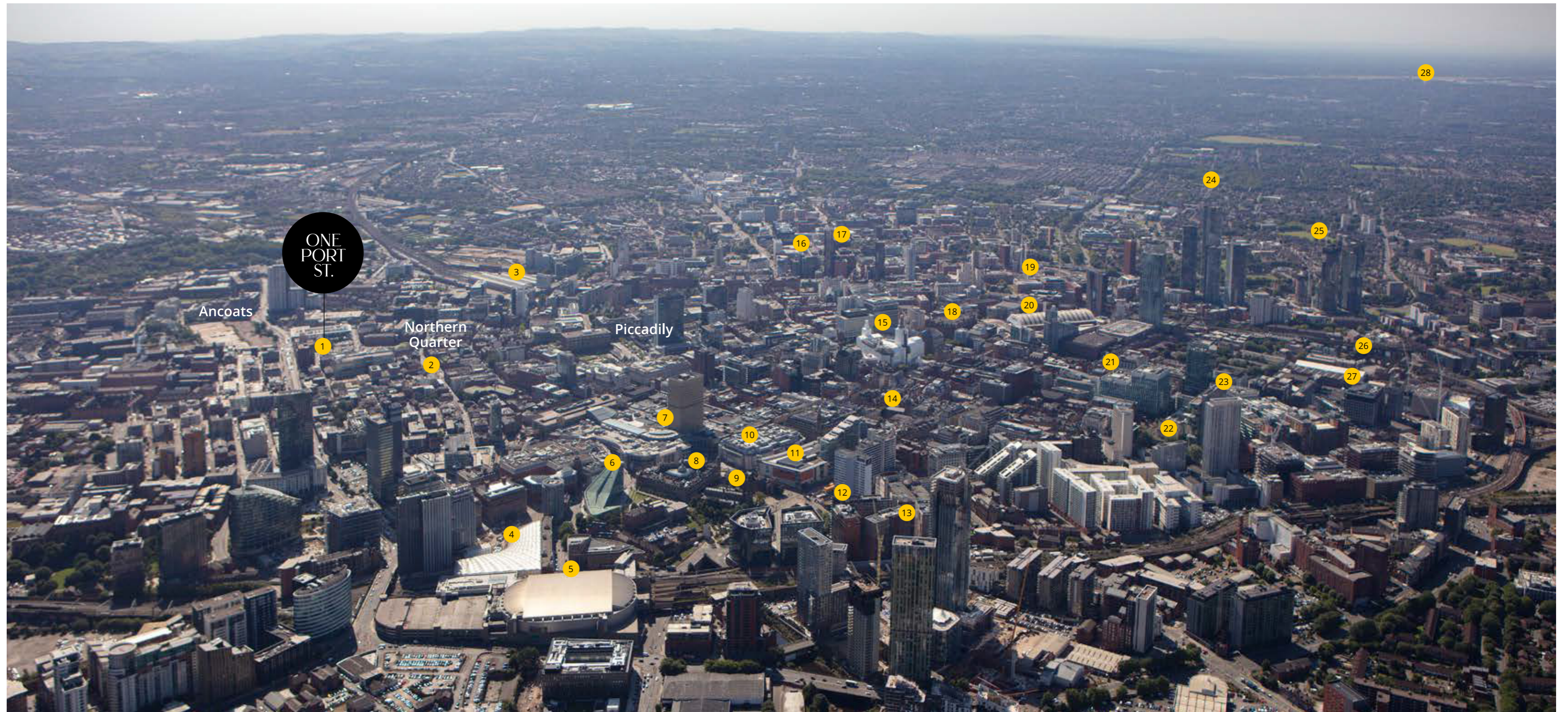
Now a lively neighbourhood of cultural, creative and digital innovation, the Northern Quarter demands a residential offering to keep pace with the needs of its inhabitants.

Once a gritty textile district, Ancoats is now a happening neighbourhood of converted mills, independent cafés, and eclectic eateries. Seamlessly bordering the Northern Quarter, its canal-side location and acclaimed food and brewery scene make Ancoats a popular hangout for young professionals working in the city centre. Embracing its historical features, 'the world's first industrial suburb' is now a cosmopolitan hipster hotspot with pop-up markets and some of the city's most renowned dining experiences, including Manchester's first Michelin star restaurant, Mana.

Post pandemic, JLL reported on a boost in demand for both rural living and urban

areas. As a result, people are looking for 'the best of both worlds' – 'cities with a village feel.' "Having elements of a rural life in urban villages with a combination of green spaces, outdoor markets, shops, cafes and restaurants has been proven to enhance community cohesion and improve the wellbeing of those living there."

One Port Street bridges this gap in the market, offering city centre living in an area with a thriving community of its own. Here, like-minded neighbours will become friends.



# Location

- |  |                            |                                     |  |                                      |
|--|----------------------------|-------------------------------------|--|--------------------------------------|
| 1. One Port Street                     | 7. Arndale Centre          | 13. Affinity Living Embankment West | 19. Vita Student First Street            | 25. The Blade / Three60              |
| 2. Stevensons Square Northern Quarter  | 8. The Print Works         | 14. St. Annes Square                | 20. Manchester Central Convention Centre | 26. Castlefield                      |
| 3. Manchester Piccadilly Train Station | 9. Manchester Cathedral    | 15. Manchester Town Hall            | 21. Spinningfields                       | 27. St. Johns                        |
| 4. Manchester Victoria Train Station   | 10. Selfridges             | 16. Vita Student Circle Square      | 22. Affinity Living Riverside            | 28. Manchester International Airport |
| 5. A.O. Arena                          | 11. Harvey Nichols         | 17. Vita Living Circle Square       | 23. Affinity Living Riverview            |                                      |
| 6. National Football Musuem            | 12. Citysuits Apart Hotels | 18. Midland hotel                   | 24. Crown Street, Elizabeth Tower        |                                      |



## About Select Property

£2.6+ billion of  
global property sales  
since 2004

### The developer behind One Port Street

Since the business was founded in 2004, we've sold more than 15,000 properties across five brands worth a total value of £2.6+ billion. With offices in Manchester, Dubai, Shanghai, Hong Kong, and Malaysia, we're never far away from our global investor community.

The business is driven by a deep understanding of the residential market and agile product development, brought together by a team of experts across multiple disciplines. From planning and acquisition to tenancy management and exit strategy, our end-to-end service sets us apart from the rest.

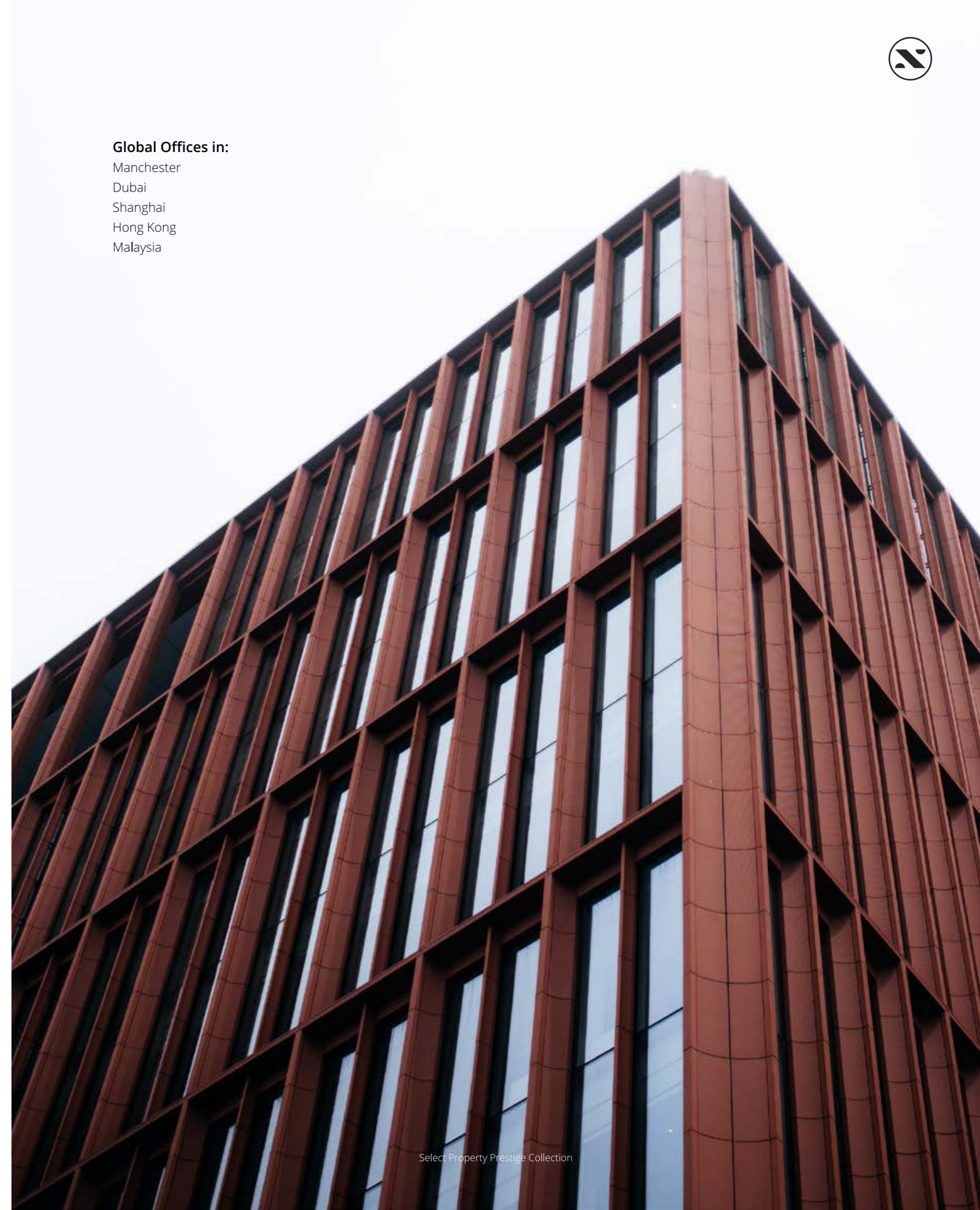
Everything we do is driven by our mission to create market-leading property investments shaped by people and experience to drive the strongest returns for investors.

Our long-established reputation for developing, selling, and managing the very best property investments is what attracts investors to Select Property.

But it's the market-leading returns, ongoing support, and hassle-free approach that makes them re-invest with us year after year.

### Global Offices in:

Manchester  
Dubai  
Shanghai  
Hong Kong  
Malaysia



## One Port Street

# A new benchmark for inner-city living

One Port Street is our most prestigious project yet – a bespoke residence with all the amenities of a five-star hotel and the exclusivity of a private member's club.

With its tier 1 location, outstanding specification and unrivalled amenities, One Port Street is the first development within our new flagship brand, the Prestige Collection.

Embracing the Northern Quarter's charm and character, this bespoke development will set a new benchmark for inner-city living. We are incredibly excited to be developing in the creative epicentre of the city for the first time, addressing the gap in Manchester's purpose-built rental market with the highest quality offering.

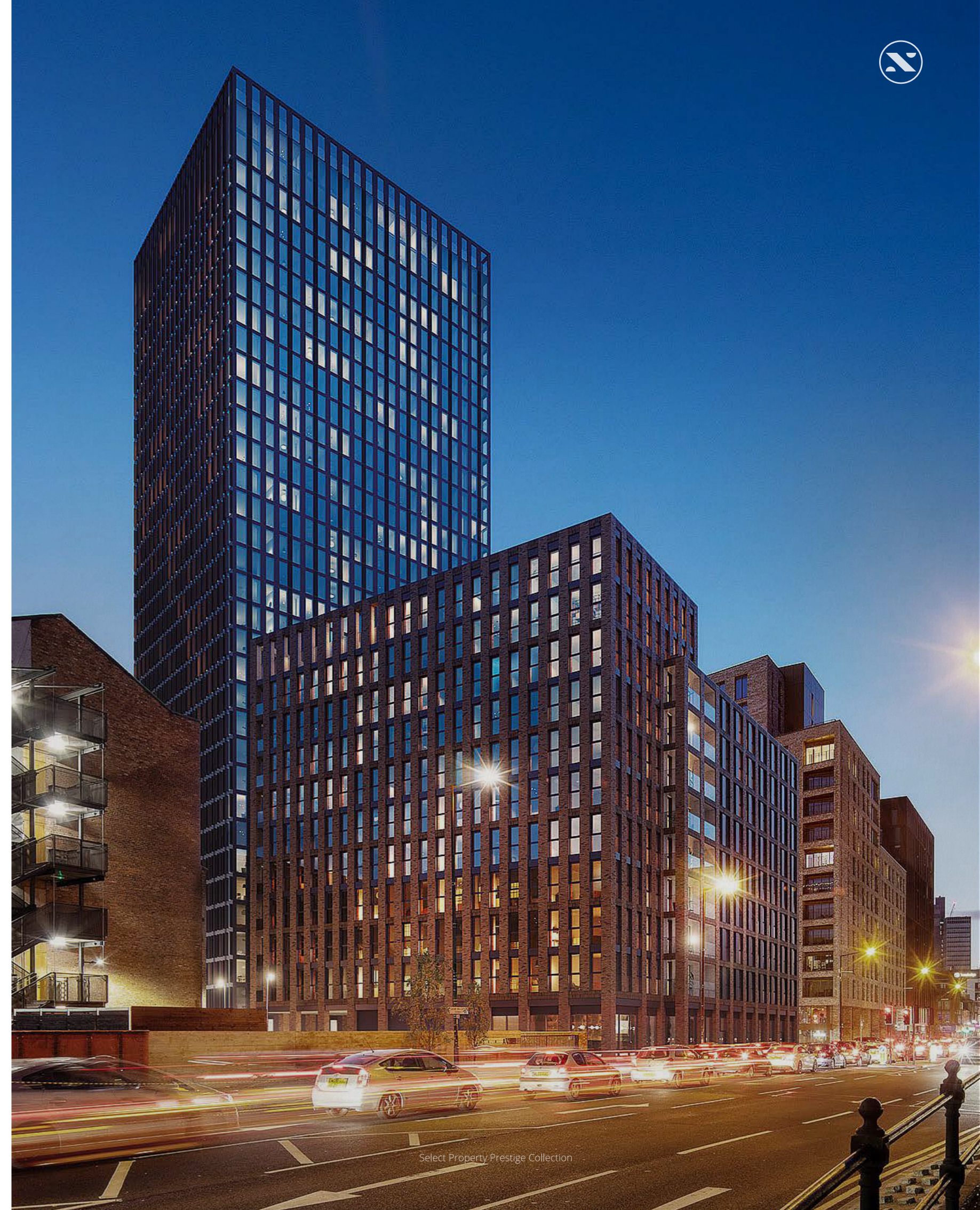
Our strong track record as a developer and an exclusive investment partner gives me absolute confidence that One Port Street will be one of the finest investments to launch in the UK in recent years. With eight residential Manchester developments in our portfolio, we are one step ahead in understanding what the city's tenants are looking for.

Given Manchester's current performance as an investment city and its exciting future growth projections, this is an opportunity not to be missed. Our proven investment model in times of wider uncertainty demonstrate the resilience of the UK property market, which is why investors globally choose Select Property time and time again.

What an incredible honour it is to develop in such an important area of Manchester city centre – an unmissable opportunity for Select Property and our investors.

The first development of its kind in the Northern Quarter area, One Port Street will quickly become one of the most in-demand postcodes in Manchester.

**Adam Price**  
Chief Executive Officer



# Manchester

## A high growth, high demand investment city

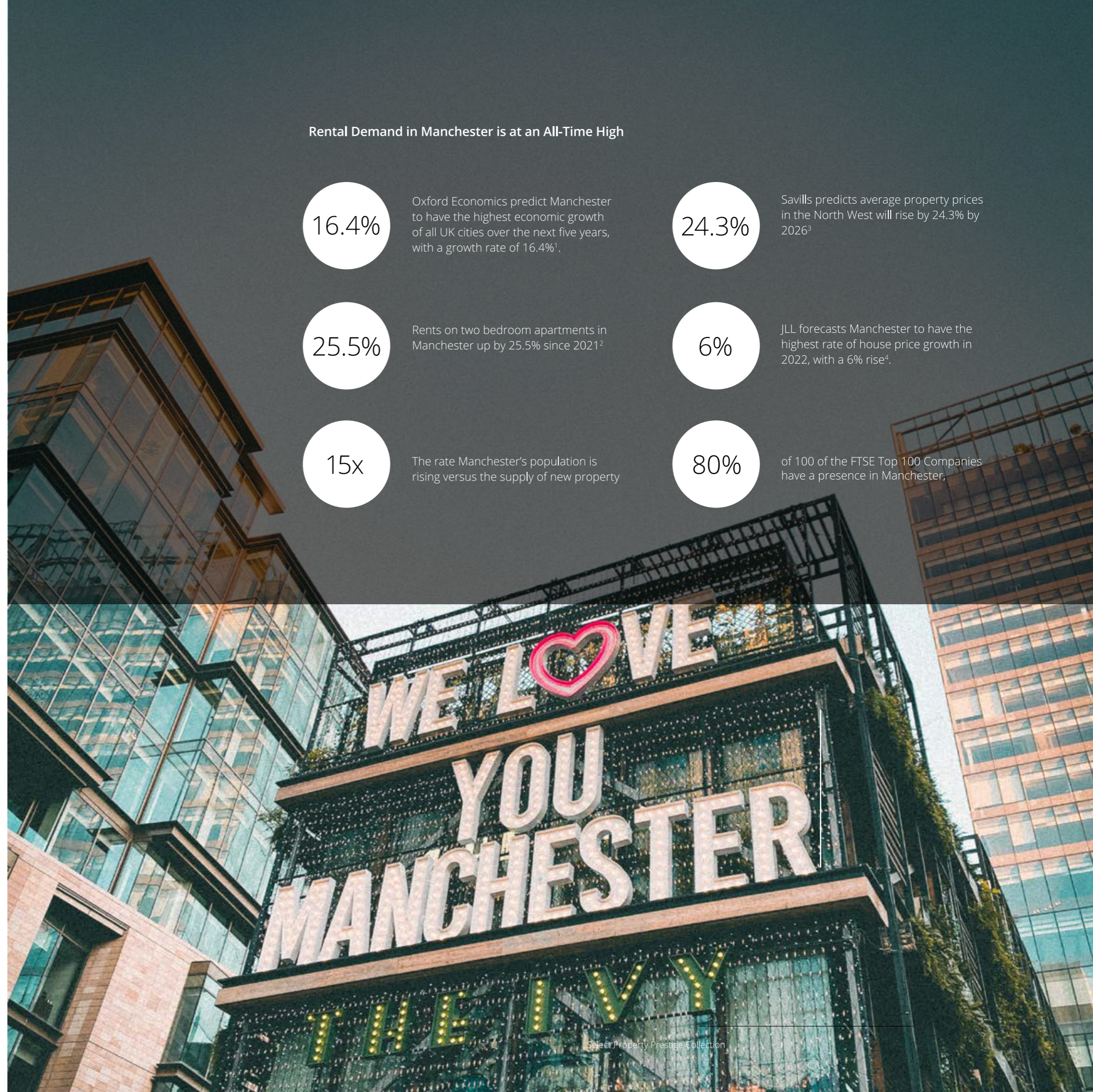
### The Economic Powerhouse of the North

A city that's attracting investment from around the world. Take just one look at the many cranes that are reshaping Manchester's skyline right now and you realise that this is a city growing.

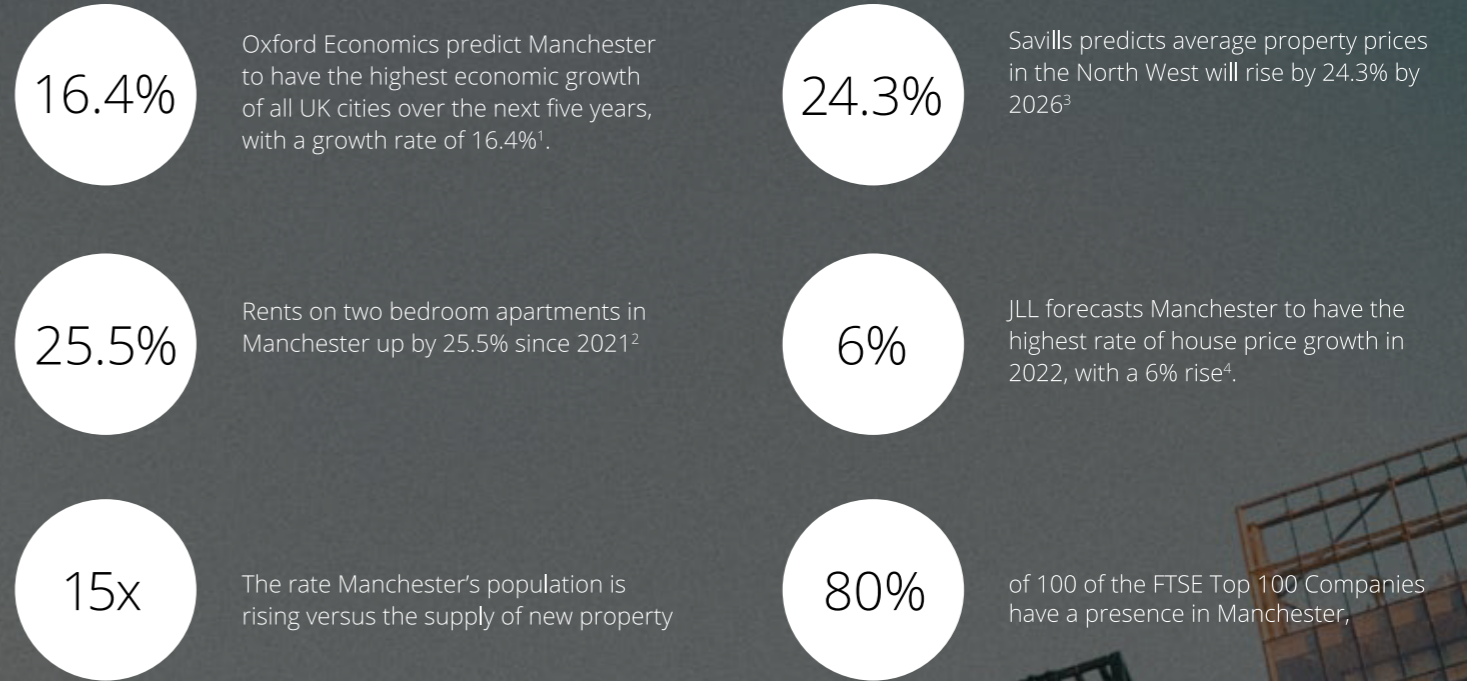
A city with a young, expanding population. Home to elite universities and world famous football clubs as well as some of the world's biggest multinationals who have chosen the city for its first-class infrastructure.

Manchester is also one of the most in demand and under supplied property markets in the United Kingdom.

With projections forecasting Manchester and the North West to drive growth in the next five years and beyond, everything is in place for the city to remain one of the strongest places to buy property in both The United Kingdom and Europe as a whole.



### Rental Demand in Manchester is at an All-Time High



Manchester continued

# Manchester Facts.

- 1 Voted the UK's most liveable city in Global Liveability Index for the last 11 years (2011-2022)<sup>5</sup>.
- 2 50% graduate retention rate from Manchester's universities, adding new workers to the city's workforce every year.
- 3 Manchester was the top-rated city to replace the capital – 1 in 6 people support this<sup>6</sup>.
- 4 New Government Hub in Manchester planned by 2025 to accommodate thousands of civil servants.
- 5 **Distance to London:** 200 Miles (322 Kilometres) Two hour direct train link (reduced to 68 minutes on completion of High-Speed 2 (HS2)<sup>7</sup>
- 6 House prices in June 2022 were 13% higher than the same month a year earlier<sup>8</sup>.
- 7 345,000 +New homes are needed per year in England alone just to meet increasing demand<sup>9</sup>.
- 8 Unlike more volatile markets such as Cryptocurrency and Stocks & Shares, UK property is underpinned by a supply and demand imbalance.

**Region:** North West England  
**Population:** 2.8 Million



Despite wider uncertainty, UK property remains one of the strongest investments you can make. Defying economic conditions, house prices in the UK are continuing to rise.

“Despite increasing pressures on the cost of living, in the prime rental market we have seen a continuation of strong rental growth, given an ongoing imbalance between limited supply and strong demand across a wide range of tenant groups.”

**Lucian Cook**  
 Head of Residential Research, Savills



## Investor Testimonial



## A professional, respectful and warm service...

"It is with immense gratitude we thank Select Property for the understanding of our preferences, willingness to help and innovative approach to investing.

All through the years of being the clients of Select Property, we have enjoyed nothing but professional, respectful and warm service. With care and attention, the team has assisted us through the details of investing in the UK property market and made Select Property the developer and agent of our choice. We sincerely trust that our relationship will continue for many years to come and that we will enjoy many more outstanding investment opportunities together in the future.

We feel honoured and privileged to be part of Select Property's large family of property investors and will always have the attention and assistance provided to us."

**Dmitry**

## References

- 1 <https://www.greatermanchester-ca.gov.uk/what-we-do/economy/greater-manchester-forecasting-model/>
- 2 <https://urbanbubble.co.uk/>
- 3 <https://www.savills.co.uk/insight-and-opinion/research-consultancy/residential-market-forecasts.aspx>
- 4 <https://www.jll.co.uk/en/trends-and-insights/research/uk-residential-forecast-2022-2026>
- 5 [https://www.eiu.com/n/campaigns/global-liveability-index-2022/?utm\\_source=google&utm\\_medium=cpc&utm\\_campaign=liveability22&utm\\_term=free-download&gclid=CjwKCAjwu5yYBhAjEiwAKXkeKYUuvvda1sCFFliDHPjiAJTfYqKkSlaGGy1CVNuiie4L1034iK1BoC4SMQAvD\\_BwE](https://www.eiu.com/n/campaigns/global-liveability-index-2022/?utm_source=google&utm_medium=cpc&utm_campaign=liveability22&utm_term=free-download&gclid=CjwKCAjwu5yYBhAjEiwAKXkeKYUuvvda1sCFFliDHPjiAJTfYqKkSlaGGy1CVNuiie4L1034iK1BoC4SMQAvD_BwE)
- 6 <https://www.manchestereveningnews.co.uk/news/greater-manchester-news/manchester-top-rated-city-replace-24338776>
- 7 <https://www.hs2.org.uk/>
- 8 <https://www.halifax.co.uk/media-centre/house-price-index.html>
- 9 <https://commonslibrary.parliament.uk/research-briefings/cbp-7671/>

ONE PORT ST.  
NORTHERN QUARTER



# Huttons<sup>®</sup>

The Agency of Choice

**CONTACT YOUR PREFERRED HUTTONS ASSOCIATE TODAY!**